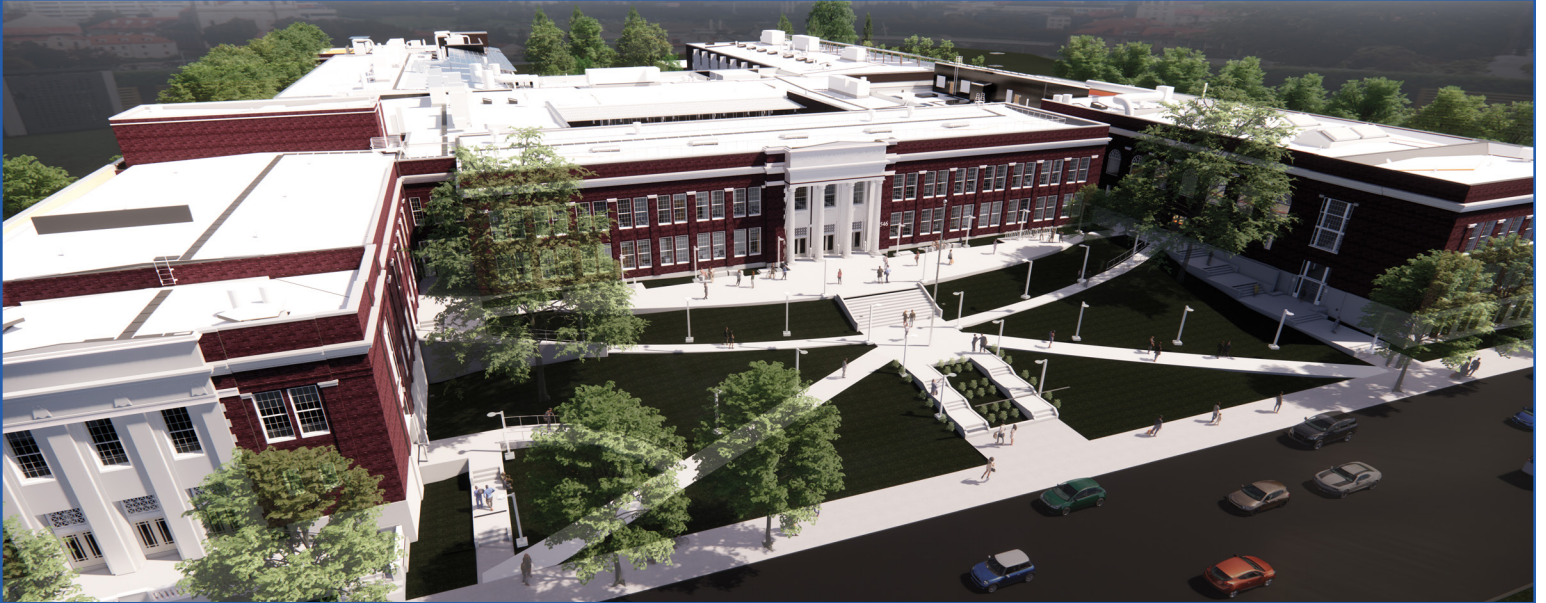




Dugsiga sare ee Benson Polytechnic

Casriyeyntiisa



Meelaha Ardaydu ku Kulmaan/Kafateeriyada

Qodobada ugu Muhiimsan Nashqadda

- Alaab wayn oo taariikh ahaan muhiim ah si fudud loo gali karo oo ammaan sugiddiisa sare loo qaaday lehna barxad xiran.
- Dhsimayaal cusub oo 2 dabaq ah oo muujinaya meel ku wada-oolidda CTE iyo barxadaha waxbarashada muhiimka.
- Dayrka shaqada CTE oo muujinaya fasalka & goobta shaqada daboolan/aan daboolayn ee dibadda ah.
- Meel ardaydu ku kulmaan/kafateeriya oo bartanka ah oo ku xiran dayrka gudaha kaasi oo u taagan udub-dhexaadka dugsiga cusub.
- Sare u qaadidda tiyaatarka oo joogtaynaysa sifo taariikhi ah iyadoo dhinaca kale lagu kordhinayo iftiinka noocyadii ugu dambeeyey iyo teknoolojiyadda maqal-muuqaalka ah.
- Qol Bulsheed cusub oo fududaynaya la macaamilka ardaydii hore, saaxiibada suuqa & bulshada.
- Meelo fududaynaya wada-shaqaynta ardayda, shaqada kooxda yar iyo macaamilka bulsheed.

Jadwalka Mashruuca

GUGA 2019 - XAGAAGA 2021

Nashqadda & Oggolaanshaha

Nashqadda la Fududeyey / Soosaaridda Nashqadda / Waraaqaha Shaqada Dhismaha / Oggolaanshaha

DAYRTA 2021 - XAGAAGA 2024

Shaqada Dhismaha

Ardayda iyo shaqaaluhu waxay si kumeel gaar ah ugu guuri meel kale inta dhismuhu socdo.

DAYRTA 2021

Dhammaystirka

Kambaska Benson oo oo si buuxda loo casriyeyey ayaa furmi



Albaabka Dayrka Koonfureed oo leh Qalabka Qorraxda Tamarta ka Dhaliya iyo Shaybaarka Bay'oolojiga Roof De

Faahfaahinta Casriyenta Benson

Waji kala u Yeelidda Benson Polytechnic ee Taariikhiga ahaa

Shaqada dhismuhu waxay bilaabmi dayrta 2021 si sifo buuxda loogu casriyeeyo Benson Polytechnic. Dib u qaabaynta waxa kujiri doona adkaynta dhismayaasha taariikh ahaan muhiimka ah iyo sare u qaadid dhammaystiran xagga caafimaadka & badbaadada. Qodobada muhiimka ah ee nashqadda qaarkood waxa kamid ah barxadaha iyo tukaamada waxbarashada CTE oo la cusboonaysiiyo, meelo ardaydu ku kulmaan/kafateeriya oo bartanka ah oo ku xiran dayrka gudaha iyo dib u qaabaynta xarunta jimicsiga & tiyaatarka. Kambaska oo dhan waxa la nashqadeeyey iyadoo laga duulayo inuu waaro; qaybo fara badan ayaa dib loo adeegsan, in ka badan 40 geed oo cusub ayaa la beeri, qalabka tamarta qoraxda ka dhaliyana wuxuu siin ugu yaraan 400 kW oo tamarta la cusboonaysiin karo ah. Kambaska cusub ee casriga ah wuxuu sii wadi inuu dhiirgaliyo oo kaqaybgaliyo facyada mustaqbalka ee ardayda Portland ee kala duwan.

Wacaasha Dayrta 2020 ee Benson

Kooxda nashqadda Bassetti Architects waxay dhammaystireen Soosaaridda Nashqadda waxayna hadda ka shaqaynayaan Waraaqaha Shaqada Dhismaha si oggolaansho loo helo. Waxay si dhaw ula shaqaynayaan qandaraaslahayaga Andersen Construction si ay u dhammaystiraan nashqadda waxayna qiimaynayaan qiyaasaha qiimaha qandaraaska iyagoo kujira isku-diyarinta bilawga shaqada dhismaha ee dayrta 2021. Wixii macluumaad iyo wacal dheeraad ah booqo websaytka Casriyenta Benson <http://BensonBond.pps.net>

Dhismaha MPG oo Cusub wuxuu uu wax ka qaban doonaa baahiyaha ardayda kala duwan

Kambaska cusub sidoo kale waxa kujiri doona dhisme dabaqyo badan ah oo hoy u noqonaya barnaamijka PPS Multiple Pathways to Graduation (MPG) waxaana kujiri doona xarumo loogu talagalay Alliance at Benson and Meek, DART/Clinton, Teen Parent Childcare, Reconnection Services & Program. Macluumaad dheeraad ah oo faahfaahsan oo tan kusaabsan fadlan booqo websaytka mashruuca (MPG): <https://www.pps.net/Page/14873>

Barnaamijyada Benson Tech/MPG meel kale ayaa loo rari muddada shaqada dhismuhu socoto

Si sare loogu qaado badbaadda iyo waxtarka mashruuca, dhammaan ardayda iyo shaqaalaha si kumeel gaar ah ayaa meelo kale loo rari muddada shaqada dhismaha: Shaqaalaha iyo ardayda Benson waxa la gayn Marshall Campus on SE 92nd Ave. Dugsiga sare ee Alliance, Reconnection iyo DART/Clinton waxa la gayn Kenton Campus. Ardayda Fiidka & Xagaaga waxa la gayn Dugsiga sare ee Grant.

Gaadiidka aadaya Marshal Campus

PPS hadda waxay darsaysaa ikhtiyaarada gaadiidka ee ka caawin doona ardayda Benson inay tagaan Marshal campus muddada shaqada dhismaha ee saddexda sano ah. Qorshaha gaadiidka waxa kamid noqon kara isku-darka gaadiidka dadwaynaha iyo adeegga baska dugsiga ee jaallaha. Marshall campus waxa lagu samaynayaa sare u qaadid si uu u taageero barnaamijka goonida ah ee Benson Polytechnic CTE.

BUILDING OUR FUTURE TOGETHER.

<http://BensonBond.pps.net> • Email: BHSMoD@pps.net • Phone: 503-916-2222
 f www.facebook.com/pps.homepage/ @PPSConnect

Portland Public Schools
 School Building Improvement Bond

